

# Humanoid Robot Solutions

ENNOVI delivers advanced interconnect, power, sensing and structural solutions for next-gen humanoid robots. Our solutions help reduce system complexity, improve reliability, and accelerate the journey from prototype to high-volume production.

# ENNOVI™

## JOINTS

SUPPORTS REVOLUTE (ROTATIONAL), PRISMATIC (LINEAR), AND SPHERICAL JOINTS

## ACTUATOR

+ Actuator Mechanical Component

## GEAR DRIVE

+ Positioning Gear Sleeve  
+ Power Transmission Connector with Thread & Tooth Profile

## REDUCER

+ Reducer Mechanical Component

## STRUCTURAL LINK

+ Connecting Flange  
+ Press-Fit  
+ Solder Bearing Lead (SBL)  
+ Insulation Displacement Contact (IDC)

## WRIST

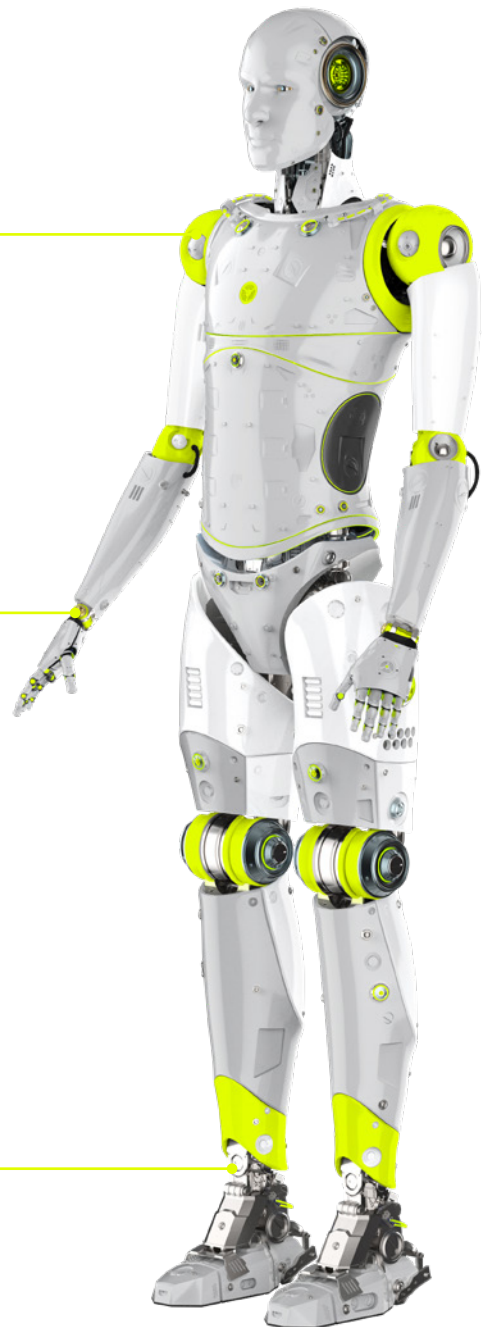
TORQUE SENSOR  
+ 6-axis Force Sensor Component

## ANKLE

TORQUE SENSOR  
+ 6-axis Force Sensor Component

## PROCESS CAPABILITIES

- + Anodizing
- + Cold Forging
- + Die Casting
- + Machining
- + Molding
  - + PEEK molding
  - + Carbon-fiber reinforced plastics
- + Plating
- + Stamping
- + Welding



# Global reach ENNOVI by numbers

HQ

Singapore

8,000+

Employees

8

R&D Centers

22

Manufacturing Sites

100%

ISO 9001:2015,  
IATF 16949:2016,  
ISO 14001:2015  
certified

12

Countries

## We harness the power of two megatrends

- + electrification and AI
- + to help industries innovate at speed, operate smarter, and achieve sustainable growth.

By combining these transformative forces with our global reach and best talent, we empower our customers to lead their markets and drive sustainable progress.

- MANUFACTURING
- RESEARCH & DEVELOPMENT



Need a custom solution?

CONTACT US



© 2026 ENNOVI  
ALL RIGHTS RESERVED

FOLLOW US ON  
[LINKEDIN](#)  
[YOUTUBE](#)  
[WECHAT](#)

VISIT [ENNOVI.COM](#)  
FOR MORE DETAILS

BYM-HRS-01-EN-001

# ENNOVI™